

# The Enterprising Educator



Educational research indicates that the contribution enterprise in education makes to the development of children and young people can enhance their life chances and choices. It helps to identify and nurture their natural ability to be enterprising and prepare them for a rapidly changing world of work. Enterprise in education also adds value to DYW, BTC4, HGIOS and helps to meet Career Education (3-18) and Work Placement Standards. Teaching practitioners benefit from having an enterprising mindset helping them to instil resiliency and a 'can do' attitude in the young people they teach to help them thrive and be successful in an uncertain future.

**Scotland's Enterprising Schools (SES)** has developed a capacity building model which ensures that existing and future practitioners have the opportunity to develop an entrepreneurial mindset that will help them nurture these skills in an authentic way within the classroom, with lasting effect, and fosters a culture where enterprise is used as a context for learning and teaching approaches across all levels and all curriculum areas. The professional learning focus taken by **SES** is immersive and designed to significantly invest in developing the human and social capital of the teacher-as-learner and for this to be useful and effectively impact upon their learners.

For 2019, **SES** in association with the **University of the Highlands and Islands** is launching a new masters level accredited course (attracting 20 SCQF credit points at level 11) called *'The Enterprising Educator'*.

## THIS NEW PROGRAMME WILL FEATURE:

**Learning as collaborative:** through interactive and purposeful conversations which broaden perspectives and active engagement in the wider enterprise education active learning community.

**Learning by enquiring:** to develop a critical understanding of the broad area of enterprise in education and through self-reflection and immersive activities consider its value in an educator's professional development and that of their learners.

**Learning that deepens knowledge and understanding:** by reviewing the current 'state of play', evidence and debates surrounding enterprise education (with a focus on primary and secondary sector) and critically evaluating and practising examples of pedagogical approaches to develop their learners' personal enterprising skills and capacities.



**SCOTLAND'S  
ENTERPRISING  
SCHOOLS**



University of the  
Highlands and Islands  
Oilthigh na Gàidhealtachd  
agus nan Eilean



SCOTLAND  
**CAN DO**

The pilot programme will be delivered via 'blended' delivery methods for which (in addition to newly developed Masters-level online content) practitioners will also have access to 3 face-to-face learning days, regular online learning sessions, educational research evidence and academic support. The programme also involves two assignments which can be based upon an educator's own professional context and practice.

## **THE PROGRAMME WILL INVOLVE:**

### ***Face-to-Face Learning:***

**13<sup>th</sup> June Introduction Day: 9.30am (10am start) - 4pm**

The Lighthouse Glasgow, Introductions to SES, Education Scotland and the Programme

**12<sup>th</sup> September: 9.30am (10am start) - 4pm**

The Lighthouse Glasgow, Face-to-Face Learning Session

**31<sup>st</sup> October: 9.30am (10am start) - 4pm**

The Lighthouse Glasgow, Face-to-Face Learning Session

### ***Weekly Online Learning Sessions:***

**1.5 - 2 hours, Wednesdays, 6pm - 8pm**

(Excluding the October break)

### ***Assignment dates:***

**9th October: First Assignment Due, Project Plan**

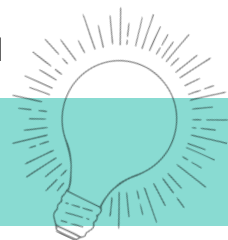
**4th December: Second Assignment Due, Personal Report**

## **WHAT ARE THE COSTS AND HOW DO I APPLY?**

Course fees are paid by **SES** - any travel and accommodation costs incurred are the responsibility of the individual school or local authority. The course is open to all educators working with children and young people ages 3 - 18. Applications should be sent by email and include:

- Your contact details with an outline of your current job role and areas of responsibility
- Why you feel the programme will benefit your professional development
- How you anticipate the programme will help make an impact on your role/teaching practice
- How you intend to share this learning with your colleagues and local authority
- Confirmation of approval to participate from your Head Teacher or department head

Send your application, in confidence, by noon **Thursday 28<sup>th</sup> March 2019** to  
[contact@enterprisingschools.scot](mailto:contact@enterprisingschools.scot)



**SCOTLAND'S  
ENTERPRISING  
SCHOOLS**



University of the  
Highlands and Islands  
Oilthigh na Gàidhealtachd  
agus nan Eilean



Highlands and Islands Centre  
for Enterprise and Innovation

SCOTLAND  
CAN DO